



**GLOBAL AUTOMATION &  
IDENTIFICATION GROUP**

**GLOBALAUTOID.COM**

**@GLOBALAUTOID**

**TOTAL TRACEABILITY SOLUTIONS**

# About GlobalAutoID

The mission of Global Automation and Identification Group (GlobalAutoID) is to be the best information resource for businesses seeking data acquisition and vision solutions for anywhere in their manufacturing process and supply chain.

We leverage our group's relationships with solutions providers and decades of industry experience to provide data, insights, and curation of news and trends that solutions buyers need in order to decide which solutions are best for their business.

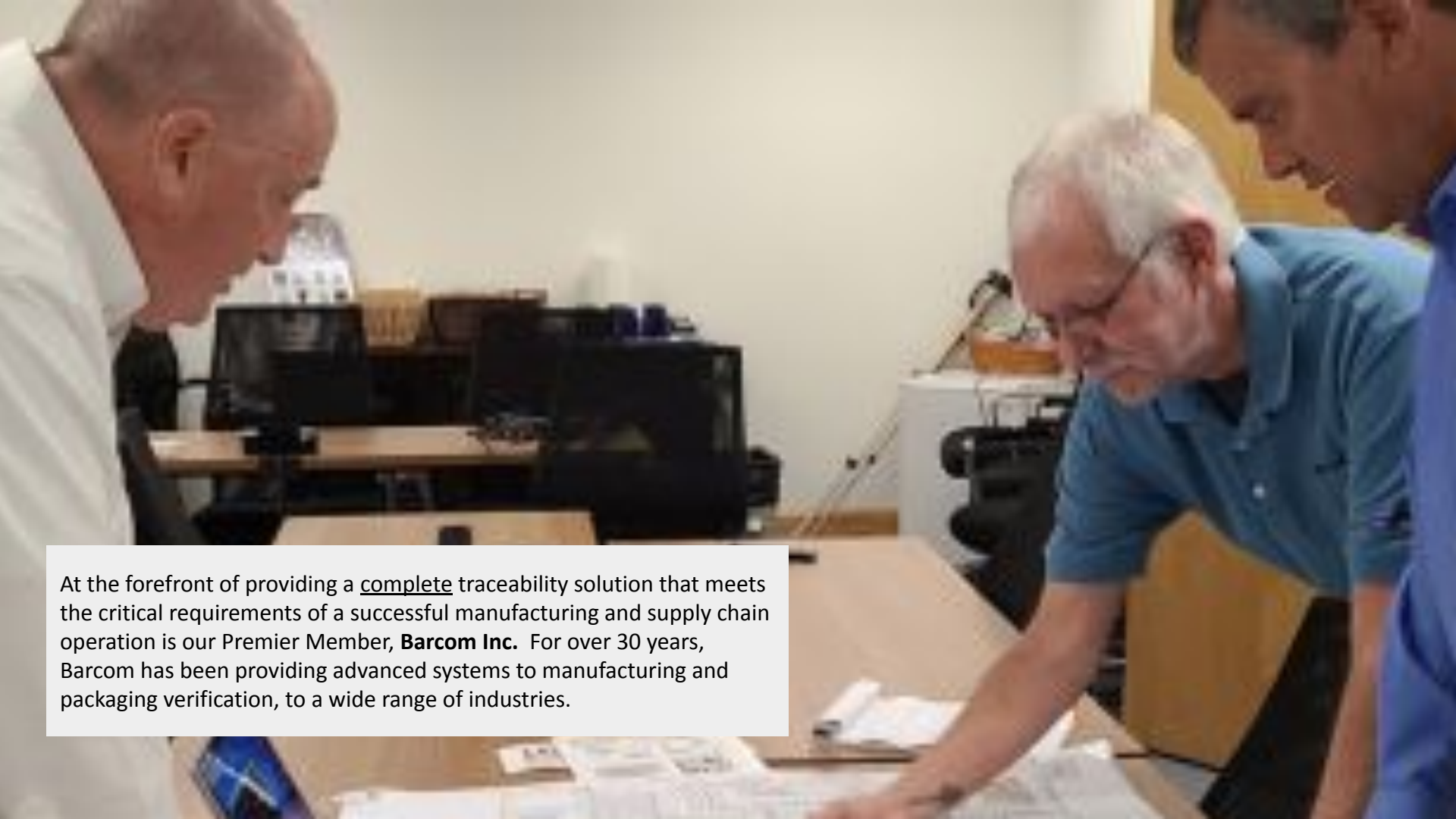
GlobalAutoID is led by [Michael Cizek](#), a Senior Business Development Consultant with a background of over 40 years of experience, in the Data Acquisition and Vision Solutions industry, which includes various senior sales management positions at the regional, national, and international level.

**Traceability** is knowing where everything in the manufacturing process is in real time. From raw materials to a final product being delivered to the end user and even to the end of life for that product. Traceability helps to ensure the integrity of the entire supply chain.

**GlobalAutoID** is a consortium of solution providers that are experts in the critical field of traceability that includes track, trace, and control, package and product verification, and brand protection (anti-counterfeiting/diversion) solutions.



**Our group consists of marking technologies, lighting solutions, hardware/software, integration, and first in class “pre-post” sales support.**



At the forefront of providing a complete traceability solution that meets the critical requirements of a successful manufacturing and supply chain operation is our Premier Member, **Barcom Inc.** For over 30 years, Barcom has been providing advanced systems to manufacturing and packaging verification, to a wide range of industries.

# The Traceability Process

*A combination of solutions by Barcom and other GlobalAutoID members*



### **The Traceability Process - Site Survey (pre-sales support)**

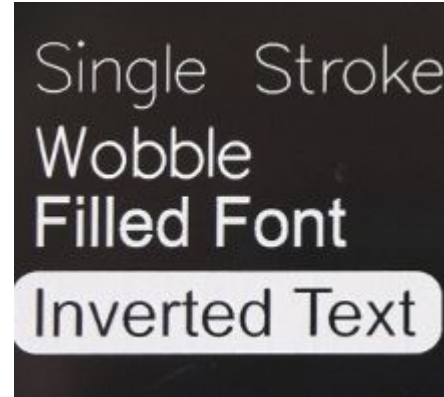
The Barcom team has the expertise to review a prospective installation, evaluate the operational requirements, understand the objectives of management, and determine the capabilities and limitations of existing enterprise systems. Based on the information acquired during this survey they will be able to recommend solutions in order to ensure a successful installation.





## The Traceability Process - Product Identification

A successful traceability program consists of many components. Determining what information needs to be managed and at what point in the manufacturing or supply chain process is the first step. If this is a manufacturing operation marking and product identification is typically required. In many cases a DPM (direct part mark) will be appropriate. Our marking experts at MECCO are prepared to assist in this process. MECCO has over 100 years of experience in direct-marking methods and technologies. They supply both impact as well as the latest in non-contact laser systems to meet any requirement. MECCO provides the physical basis for traceability. If a label or tag is the more appropriate method for item identification, Barcom is able to meet that requirement.





When it is determined that the operation requires remote recording or capture of product information, **RFID** may be the best - or in many cases - the only approach. The Barcom team are experts in RFID and will provide the guidance you can trust.



## The Traceability Process - Lighting

In order to effectively capture the product information, particularly if it is via a DPM, lighting is critical. Our member, CCS, is a recognized leader in advanced lighting solutions. CCS is a global provider and works closely with our group to supply the best solution to ensure the maximum process throughput. Barcom will coordinate the correct lighting configuration.



## Readers

When the most appropriate product identification process has been decided it is then time to determine the best method for entering data into the enterprise system.

Barcom will provide direction for selecting the most appropriate and robust readers, data capture, and vision inspection solutions to ensure a successful installation. Barcom specializes in 1D, 2D, and RFID technologies as well as mobile computing platforms. They are Premier Partners with many of the industry leaders, including Zebra Technologies.



## **The Traceability Process - Product Authentication**

Many high value and mission critical components and products are, unfortunately, becoming increasing targets for counterfeiting and channel diversion. This is particularly evident in the automotive, aerospace, defense, pharmaceutical, medical device, and luxury goods industries. These “bad players” not only disrupt the supply chain with their actions, fueled by greed, but also endanger lives. iTRACE Technologies, a GlobalAutoID member, is a recognized leader in methods for detecting and preventing counterfeiting and diversion. There are currently a number of on-going cases where counterfeit parts and components have been discovered after having entered the supply chain. On just a commercial level it is estimated that counterfeit products are costing respective brand owners >\$2B USD per year in lost revenue. This is in addition to the possible devastating results that out of spec and subpar parts and components pose.



## **The Traceability Process - Software**

Integrating all of these hardware selections and, in many cases, interfacing to existing ERP programs, requires expertise and resources. Barcom's team has 30+ years of software knowledge and experience.

Barcom's Transaction™ software integrates with your ERP system and is designed to track valuable assets including people, materials, and company equipment. Transaction manages the data collected through barcode scanning or RFID technology and presents it to users in an accurate, easy-to-read format. The capture of critical data enables better supply chain visibility and informed decision-making in inventory management, production reporting, warehouse management, shop floor control, labor tracking, time and attendance, and more.

## **Ongoing Support**

For a traceability project to be successful, and to continue to ensure the integrity of the supply chain, after sales support is critical and demanded. Barcom is recognized for their superior level of customer support. Their client list includes many Fortune 500 companies that depend on Barcom's expertise and support commitment.

# Let's talk.

GlobalAutoID has the connections and the experience to help companies with their track and trace needs.

- Consulting
- Needs assessments
- Member-matching
- RFP assistance



1.928.263.0097

[info@GlobalAutoID.com](mailto:info@GlobalAutoID.com)

<https://GlobalAutoID.com>